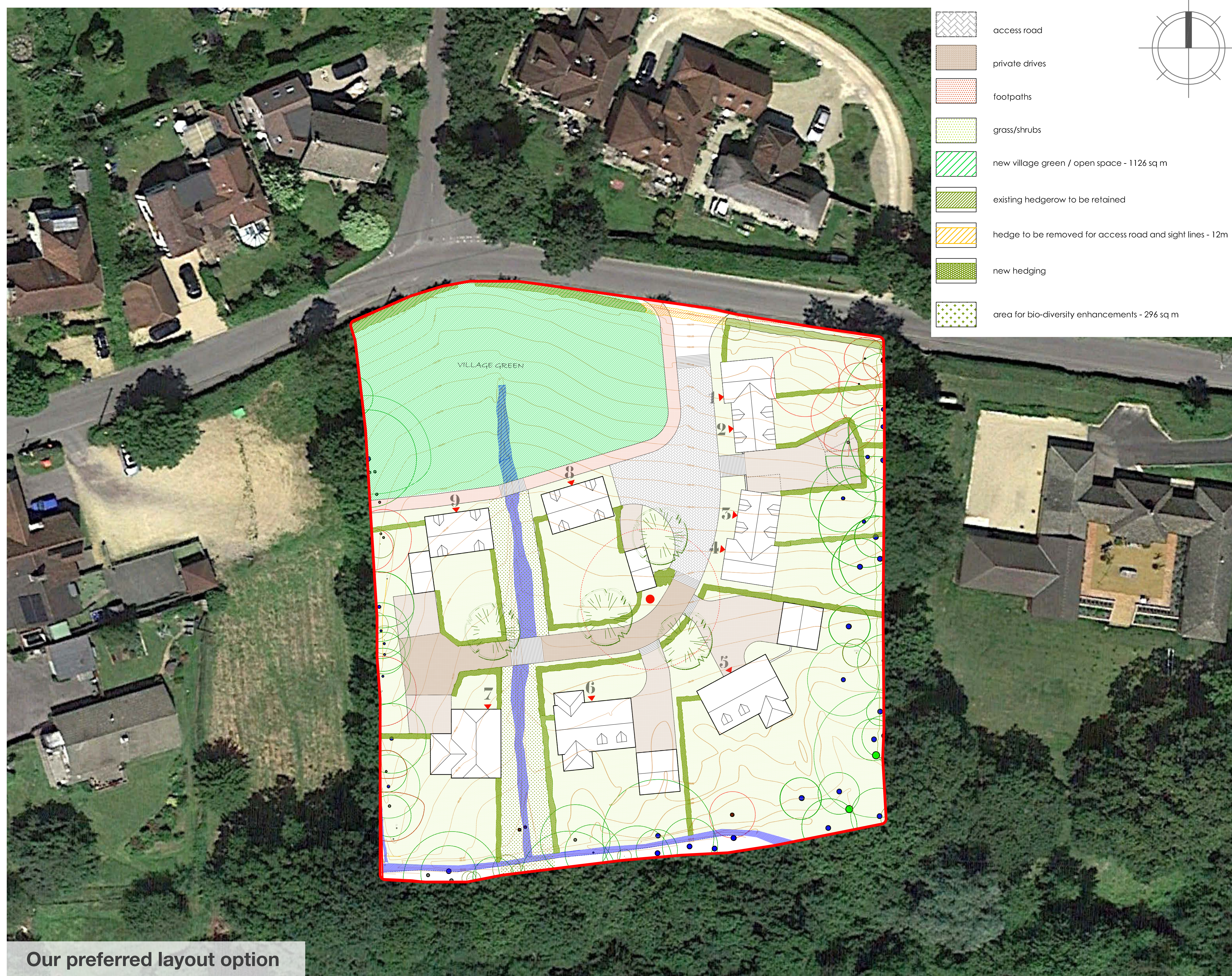


## Our Preferred Layout Option

Taking on board the feedback, the terms of the allocation and the importance of delivering much needed affordable housing in Steep, the plan below represents our preferred layout option for the site. The draft proposal includes:

- Nine high quality homes, including a mix of house-types and sizes.
- An accessible 'Village Green' on the site frontage framed by development.
- Opportunity to create pedestrian walkway through to the Village Hall.
- Retention and protection of mature trees and hedgerow and new landscaping across the site.
- Maintenance of existing ditches, enhanced for biodiversity and improved surface water drainage through use of sustainable urban drainage systems.
- On-site car parking for all new homes in line with adopted standards, including electric vehicle charging and visitor spaces.
- Eames Almshouses are the preferred body to take on the affordable properties.



Our preferred layout option